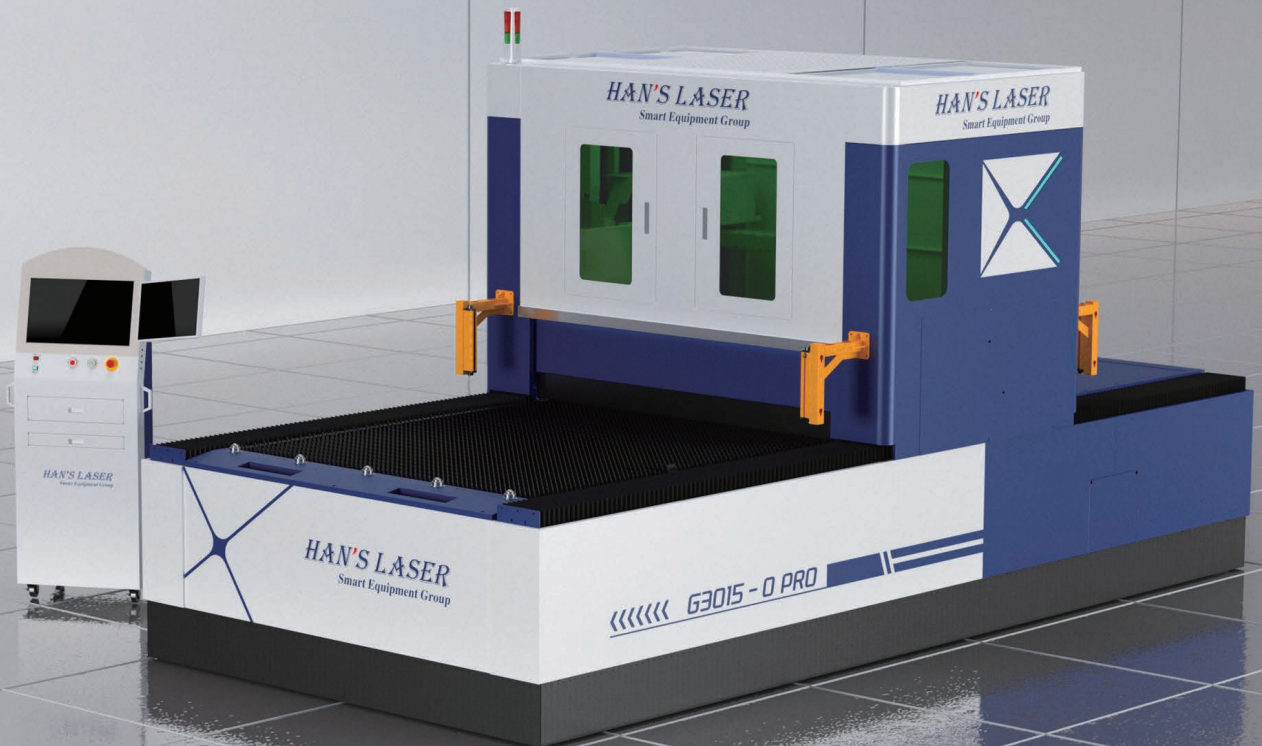


G3015-0 PRO

Single Platform Fiber Laser Cutting Machine

Available Laser Power: 3kW-20kW



Compact Footprint

Flexible Layout, High Space Utilization.

Fully-Enclosed Protective Cover

Safety & Environmental Compliance.

Easy and Flexible Loading/Unloading

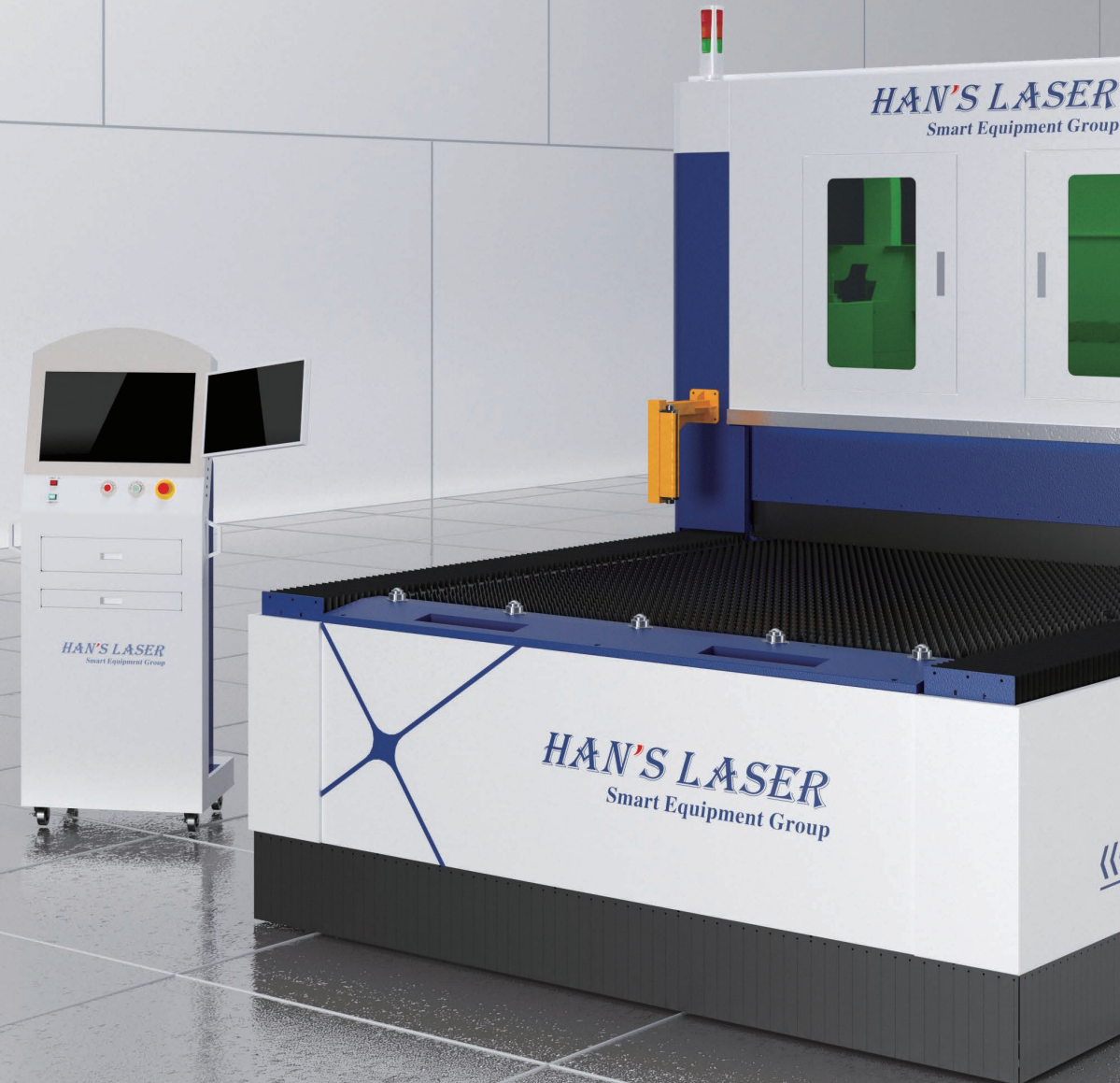
540° Easy Loading/Unloading

Supporting Eco-Friendly Production

Eco-friendly, low-smoke production via efficient ventilation and easy maintenance.

User-Friendly, Efficient Operation

Intuitive handheld/touchscreen controls streamline metal cutting productivity.



01. Compact Footprint, Flexible Layout, High Space Utilization

- Minimal floor space required; flexible layout enhances production space efficiency
- Requires only one 40HQ container for packaging and transport



02 .Total Solution for Safety & Eco-Production

•Fully-Enclosed Protective Cover & Environmental Safety

The fully-enclosed protective cover ensures operational safety during laser processing by preventing laser radiation hazards and significantly enhancing dust/fume extraction efficiency. Its sealed design minimizes fume escape, supports cleaner production, and complies with environmental standards.

•Optimized Extraction System for Eco-Friendly Production

Featuring multiple high-sealing dampers with intelligent synchronization to the cutting process, the extraction system guarantees excellent airtightness and efficient ventilation. This enables low-smoke, eco-friendly production while ensuring easy maintenance access.



03. Easy and Flexible Loading/Unloading

- 540-degree hassle-free access for effortless loading and unloading from any angle.



04. User-Friendly, Efficient Operation

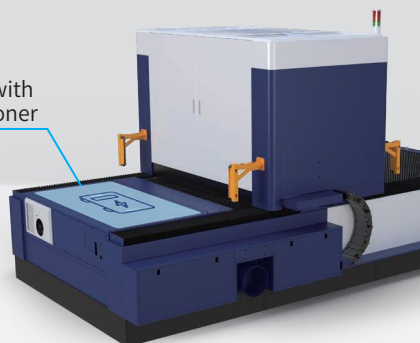
- Convenient handheld controller and touchscreen interface. Streamlined setup and control for enhanced productivity in metal cutting



05. Integrated Reliability System

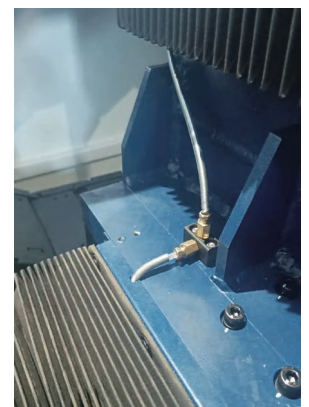
- Minimizes short-circuit risks caused by excessive electrical wiring
- Maintains constant temperature in the control cabinet, ensuring long-term, stable machine performance

Integrated Control Cabinet with Industrial-Grade Air Conditioner



Standard feature for rack and pinion guide rails

- Simplifies maintenance procedures
- Extends machine service life
- Maintains long-term cutting precision



06. HAN' S Intelligent Bus-Based CNC Cutting System

- Full-featured CNC system with excellent performance
- Customizable functions available on request
- Remote diagnostics and support
- System upgrades require only software updates, with no need for hardware replacement.

Advanced CNC Capabilities

Special lead-in functions	Breakpoint memory and resume function	Corner optimization
High-speed laser pulsing	Backtracking function	Common edge cutting and related functions
Frequency-adjustable piercing	Piercing slag removal function	Multiple nesting and cutting strategies
Sheet surface height tracking control	Automatic edge detection and multi-angle edge finding	Automatic height sensor calibration
Multi-sheet and batch processing on a single machine	Disc edge-finding, precision tracing	Follow-up function with integrated frog-jumping mode
Intelligent obstacle avoidance	Vibration suppression (for rusty or slaggy sheets)	Micro-joint and nano-micro joint cutting



G3015-O PRO Technical Specifications

Working Area (L×W)	3000mm×1500mm
X/Y Axis Repeat Positioning Accuracy	±0.03mm
Max. Positioning Speed (X/Y axes)	120m/min
Max. Acceleration (X/Y axes)	1.5G
Available Laser Power	3000/6000/12000/20000W



HAN'S LASER SMART EQUIPMENT GROUP CO.,LTD.

Han's Laser Global Production Base. No.128 Chongqing Road.
Fuhai Street, Bao'an District, Shenzhen, P.R.China 518103

Email: hanslaser01@hanslaser.com
<https://www.hansme.net>



INTRO

Han's Laser Smart Equipment Group, part of Han's Laser, is a global laser intelligent equipment company that combines laser experience, expertise, and innovation. Since 2005, when the sheet metal division of Han's Laser switched from CO₂ lasers to fiber lasers, the company has accumulated more than 20 years of experience in laser equipment manufacturing and innovation. We provide a full range of laser cutting equipment solutions and services for the smart manufacturing industry, with the goal of integrating lasers into daily life, changing the world with lasers, and promoting industrial interconnection with innovation.
